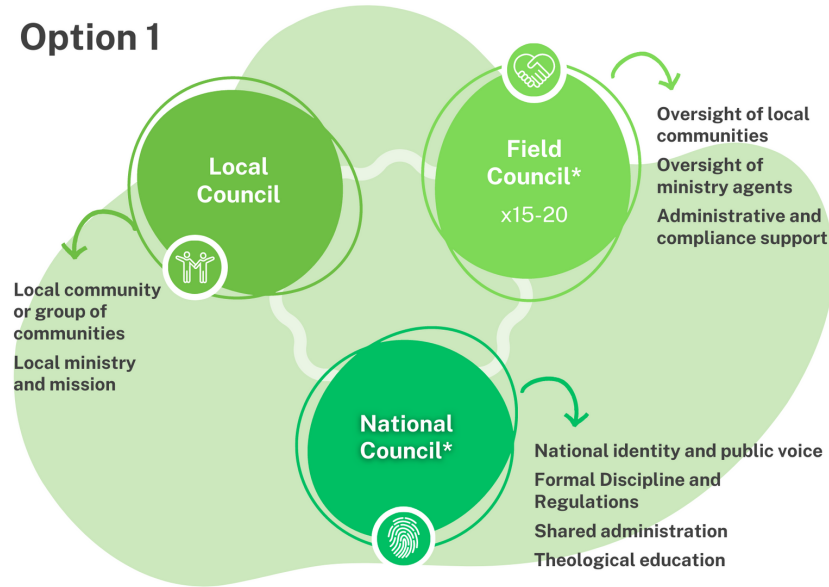


Workstream 3: Governance and Resourcing

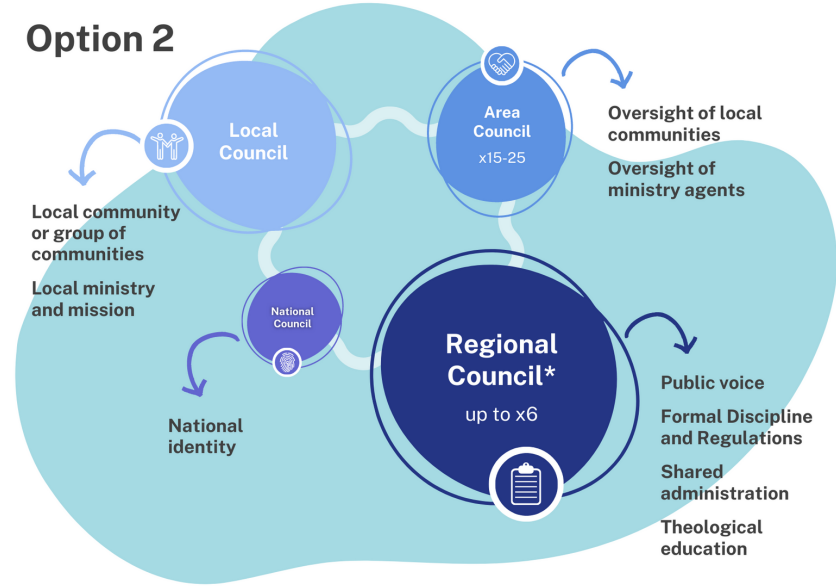
see Section 6 of *Act2: In Response to God's Call*

Clarity | Accountability | Capacity | Capability | Flexibility | Resourcing

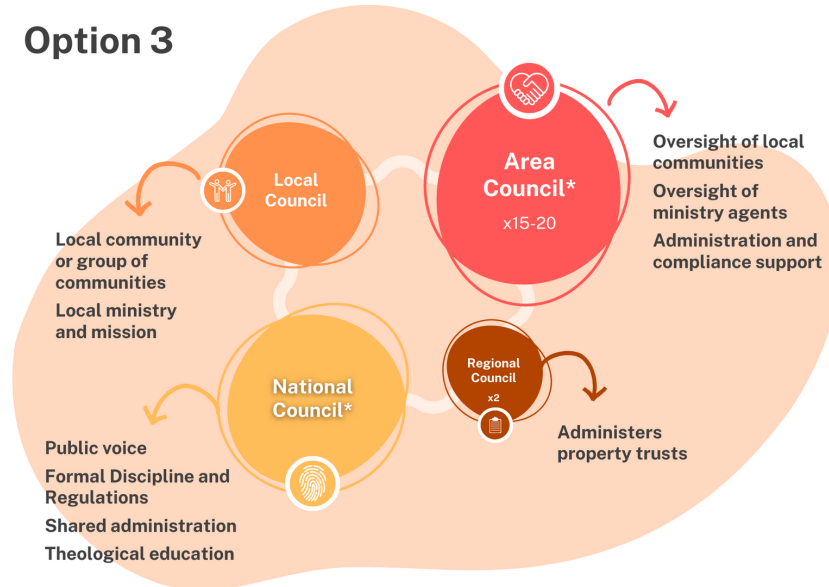
Option 1



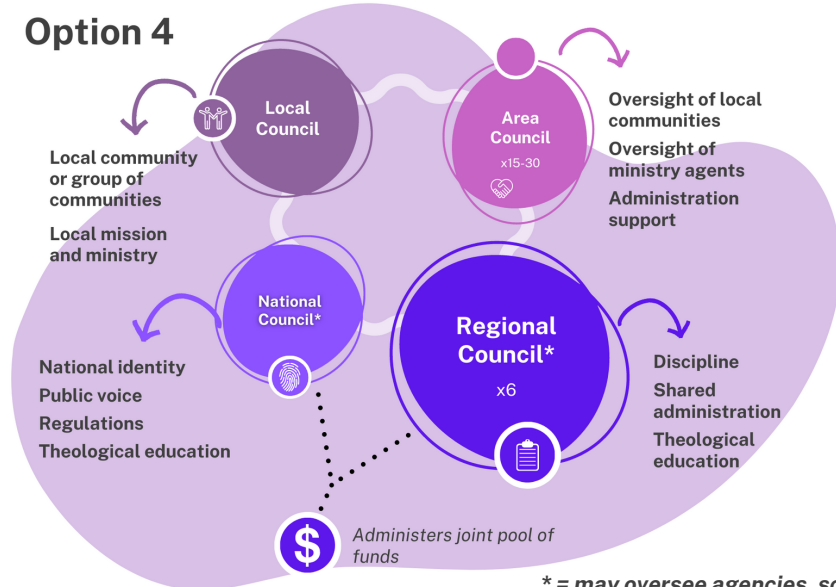
Option 2



Option 3



Option 4



* = may oversee agencies, schools or institutions

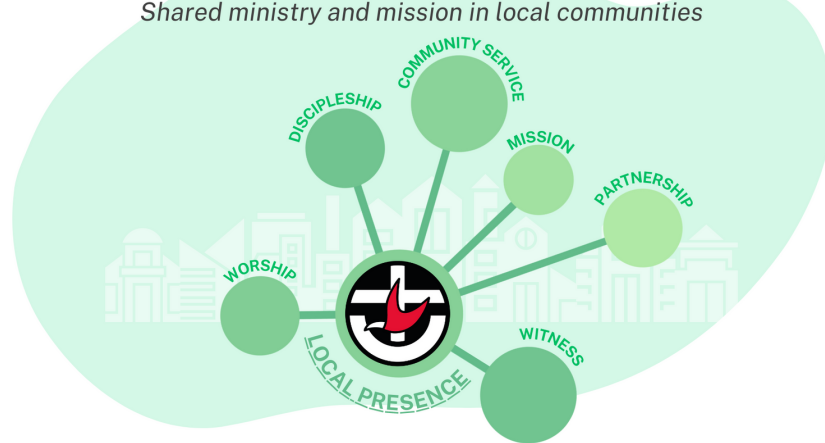
Workstream 1: Local communities of Faith and Discipleship

see Section 5 of Act2: In Response to God's Call

Direction 1

Encourage local communities of discipleship and mission

*A consistent and structured approach to discipleship
Shared ministry and mission in local communities*



Direction 2

Align with the vision of congregations in the Basis of Union

*Regulations and guidance are aligned to the Basis of Union vision
of a Congregation*



Direction 3

Support fit-for-purpose local governance arrangements

*Flexible regulations and guidance for Local Councils
Area Council support Local Councils, from time to time varying
responsibilities and appointing people*



Direction 4

Recognise there is a time for everything

*Simplifying pathways for new communities
Pastorally and effectively help communities end well*

